

IN-LINE CENTRIFUGAL FANS

FOR INDUSTRIAL / COMMERCIAL USE



- “ACFS” - Super-Silent Acoustic Cabinet Fans
- “SBAF” - Slimbox Acoustic Fans
- “CIL” - Centrifugal In-Line Fans
- “ACFB” - Acoustic Cabinet Fans - Belt Driven

Uniclass L7534



“SBAF” SLIMBOX ACOUSTIC FANS - GENERAL

“SBAF” Range - Slimbox Acoustic Fans

- 6 models from 100mm to 315mm
- Airflow from 230 to 1800 m³/hr (0.064 to 0.5 m³/sec)
- Galvanised steel cabinet lined with acoustic insulation
- Speed controllable
- Easy to install
- External connection box can be moved to opposite side of fan if required
- Easily accessible panel for service and maintenance
- Thermal overload protection
- Motor - external rotor with IP54 protection
- External connection box - IP55 protection
- Backward curved impeller with high efficiency and low noise level
- Includes fixing bracket
- Spigots allow easy and secure duct fixing
- Can be installed against ceiling or wall
- Special "Slimbox" silencers and air filter cassettes
- 2-speed versions also available



“SBAF” SLIMBOX ACOUSTIC FANS - TECHNICAL DATA

Model	Size		Power kW	Current Amps	r.p.m	Speed Controller	Breakout Sound Pres dB(A) @ 3m	In-Duct Sound Power Level dB							
	ins	mm						Mid Octave Bands (Hz)							
								63	125	250	500	1000	2000	4000	8000
SBAF100	4	100	0.060	0.26	1990	VC1	34	63	67	61	63	51	47	39	33
SBAF125	5	125	0.070	0.29	1700	VC1	40	63	66	60	64	52	48	40	33
SBAF150	6	150	0.080	0.38	2530	VC1	45	65	66	62	64	57	51	45	36
SBAF200	8	200	0.120	0.54	2550	VC1	46	67	71	76	73	65	60	55	48
SBAF250	10	250	0.190	0.83	2550	VC1	48	68	72	76	76	67	64	61	56
SBAF315	12	315	0.310	1.35	2630	VC4M	49	73	77	73	74	68	67	66	62

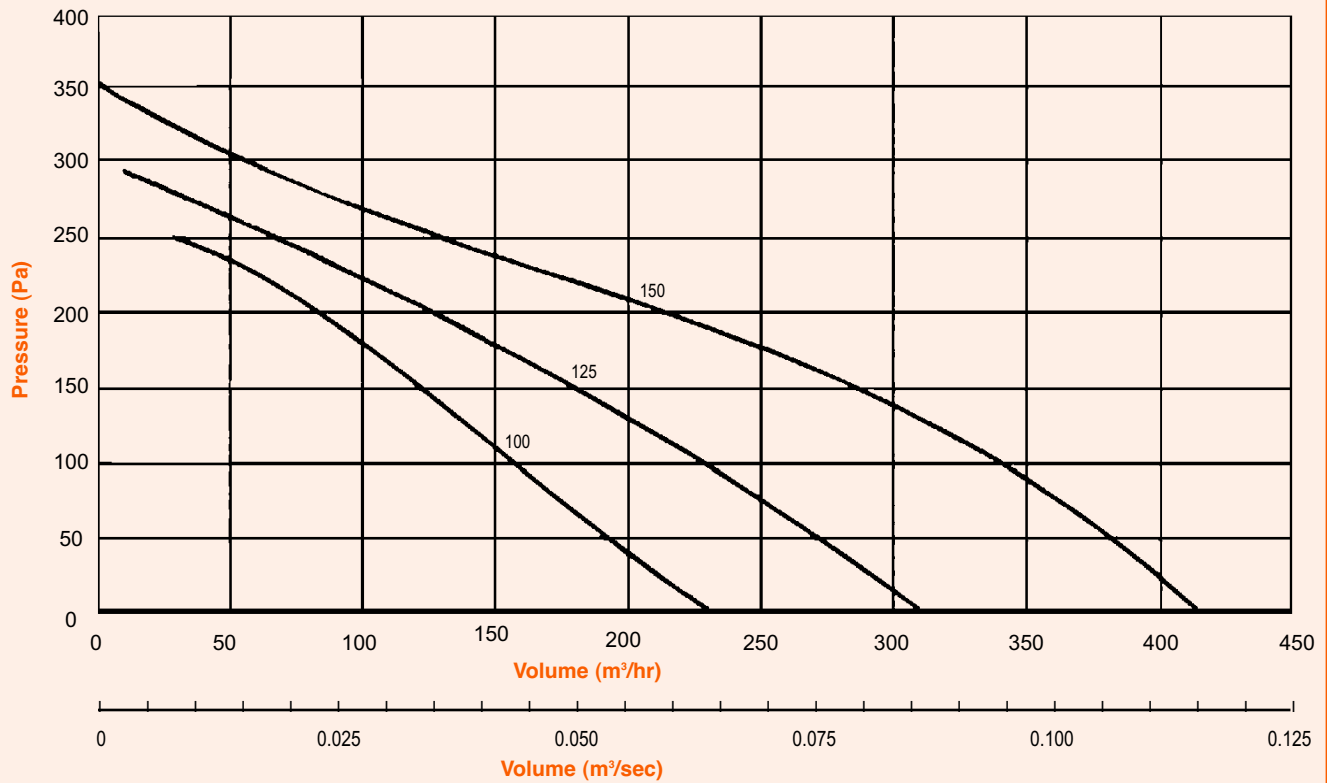
“SBAF” SLIMBOX ACOUSTIC FANS - PERFORMANCE

Model	Max Airflow		m ³ /sec at Pa											
	m ³ /hr	c.f.m.	0	25	50	75	100	150	200	250	300	350	400	500
SBAF100	230	135	0.064	0.060	0.054	0.049	0.043	0.033	0.024	0.008	-	-	-	-
SBAF125	310	182	0.086	0.082	0.076	0.069	0.063	0.050	0.036	0.017	0.003	-	-	-
SBAF150	420	247	0.117	0.111	0.107	0.100	0.093	0.079	0.065	0.036	0.010	-	-	-
SBAF200	790	465	0.219	0.214	0.201	0.189	0.175	0.153	0.133	0.103	0.069	0.039	-	-
SBAF250	1050	618	0.292	0.288	0.283	0.278	0.267	0.244	0.222	0.186	0.144	0.111	0.069	0.039
SBAF315	1800	1059	0.500	0.489	0.478	0.469	0.447	0.417	0.386	0.342	0.306	0.250	0.167	0.089



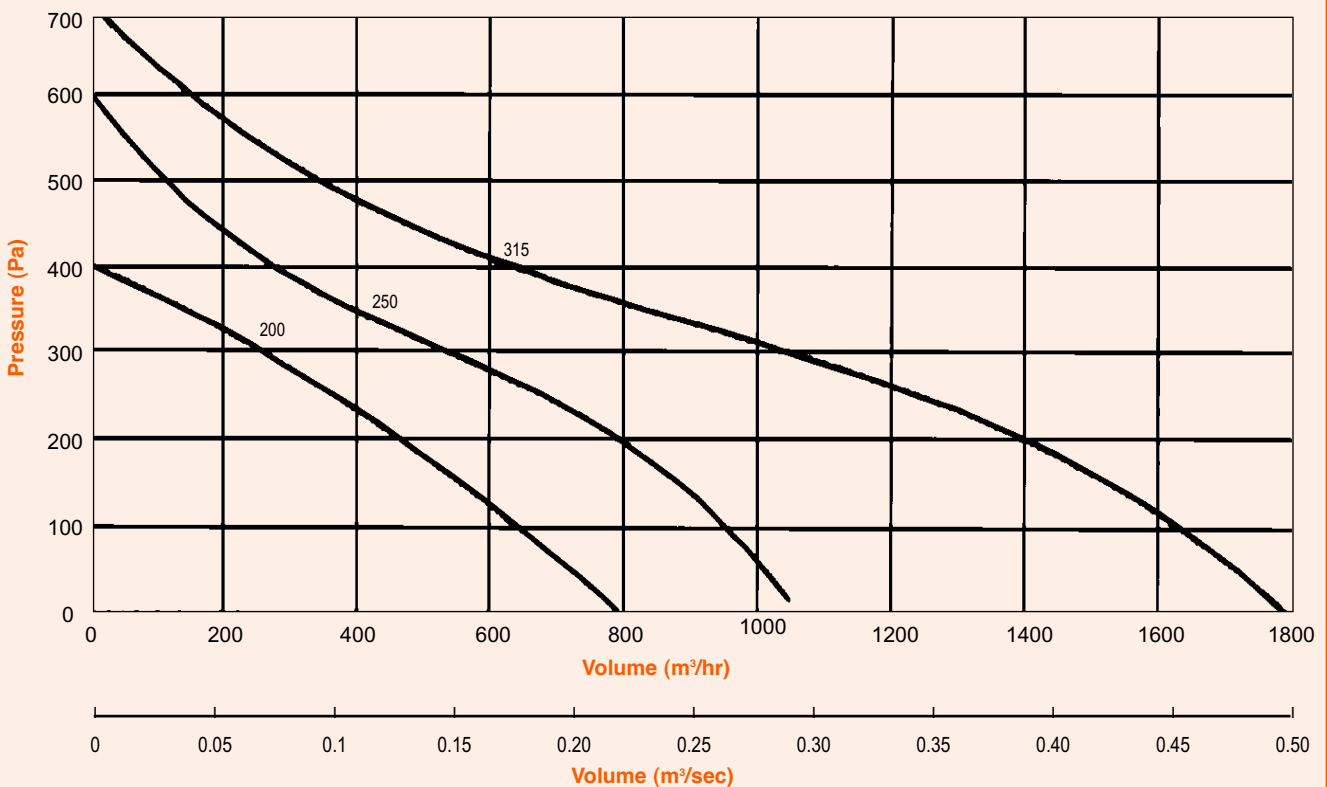
"SBAF" SLIMBOX ACOUSTIC FANS - PERFORMANCE CURVES

Models 100 - 150

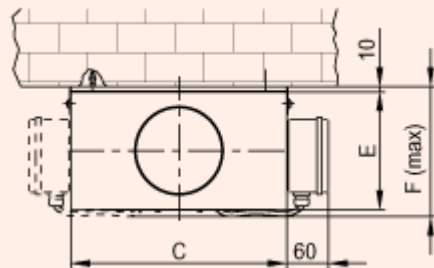
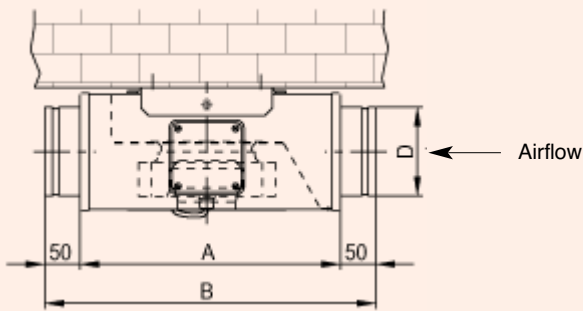


"SBAF" SLIMBOX ACOUSTIC FANS - PERFORMANCE CURVES

Models 200 - 315



“SBAF” SLIMBOX ACOUSTIC FANS - DIMENSIONS (mm)

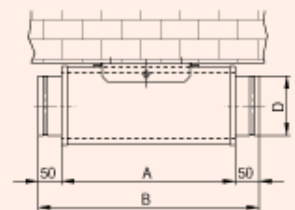
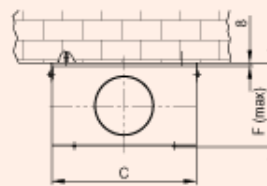
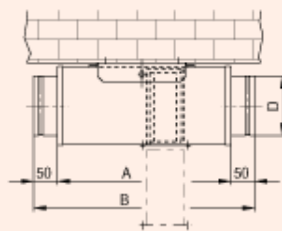


Model	A	B	C	øD	E	F (Max)	Kg
SBAF100	363	463	303	98	163	190	7
SBAF125	363	463	303	123	163	190	7
SBAF150	363	463	303	148	183	210	7.5
SBAF200	503	603	373	198	233	260	11.5
SBAF250	503	603	373	248	283	310	13
SBAF315	503	603	423	312	343	370	16

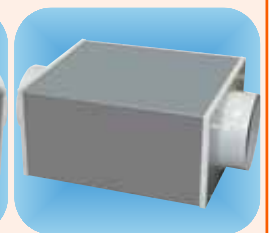
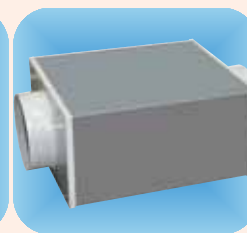
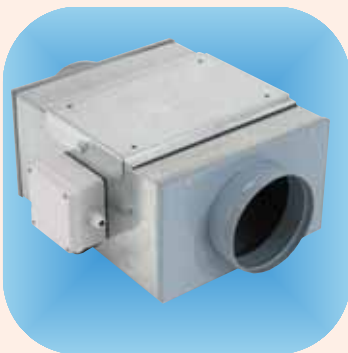
Air filter cassettes (SBFILs) and Silencers (SBSILs) are available for use **ONLY** with the “SBAF” fans. The sizes are identical to the fans themselves.

Filter

Silencer

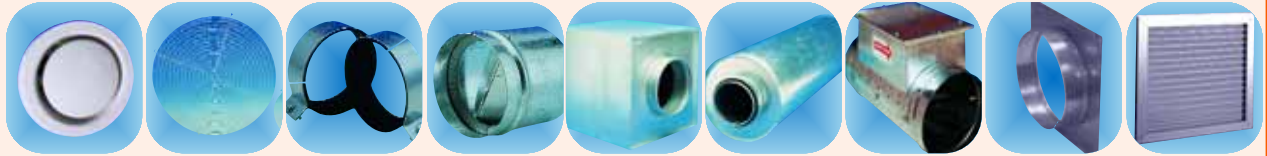


“SBAF” SLIMBOX ACOUSTIC FANS - ACCESSORIES



Fan Model	Size		Speed Controller	Filter Cassette	Silencer
	in	cm			
SBAF100	4	10	VC1	SBFIL100	SBSIL100
SBAF125	5	12	VC1	SBFIL125	SBSIL125
SBAF150	6	15	VC1	SBFIL150	SBSIL150
SBAF200	8	20	VC1	SBFIL200	SBSIL200
SBAF250	10	25	VC1	SBFIL250	SBSIL250
SBAF315	12	31	VC4M	SBFIL315	SBSIL315

ACCESSORIES



Size		Air Valve (1)	Protection Guard	Duct Clamp	Backdraught Shutter	Filter Cassette	Silencer	Duct Heater	Spigot Plate	Door Transfer Grille
in	cm									
4	10	VAV4	CILG100	CILDC100	GS100	AFC100	SIL100	DH100-0.8kw	SPL100	-
5	12	VAV5	CILG125	CILDC125	GS125	AFC125	SIL125	DH125-1.2kw	SPL120	-
6	15	VAV6	CILG150	CILDC150	GS150	AFC150	SIL150	DH150-1.2kw	SPL150	NVGD6
8	20	VAV8	CILG200	CILDC200	GS200	AFC200	SIL200	DH200-2.5kw	SPL200	NVDG8
10	25	-	CILG250	CILDC250	GS250	AFC250	SIL250	DH250-3.0kw	SPL250	NVDG10
12	31	-	CILG315	CILDC315	GS315	AFC315	SIL315	DH315-4.5kw	SPL300	NVGD12
14	35	-	CILG355	CILDC355	GS355	AFC350	SIL350	DH350-6.0kw	SPL350	NVGD14
16	40	-	-	-	-	AFC400	SIL400	DH400-11kw	SPL400	NVGD16
18	10	-	-	-	-	AFC450	SIL450	DH450-12kw	SPL450	NVGD18
20	20	-	-	-	-	AFC500	SIL500	DH500-15kw	SPL500	NVGD20



Size		Flexible Ducting(2)	Worm Drive Clips	Duct Joining Piece	T Section	Y Piece	Flexible Duct Connector(3)	Egg Crate Grille		Single Deflection Grille	
in	cm							Standard	Damper	Standard	Damper
4	10	VFD4/6	WDC4	DJP4	TP4	YP4	-	-	-	-	-
5	12	VFD5/6	WDC5	DJP5	TP5	YP5	FLC125	-	-	-	-
6	15	VFD6/6	WDC6	DJP6	TP6	YP6	FLC150	ECG6	ECGD6	SD6	SDD6
8	20	VFD8/6	WDC8	DJP8	TP8	YP8	FLC200	ECG8	ECGD8	SD8	SDD8
10	25	VFD10/6	WDC10	DJP10	TP10	-	FLC250	ECG10	ECGD10	SD10	SDD10
12	31	VFD315/6	WDC12/16	DJP12	TP12	-	FLC310	ECG12	ECGD12	SD12	SDD12
14	35	VFD14/6	WDC12/16	DJP14	-	-	FLC350	ECG14	ECGD14	SD14	SDD14
16	40	VFD16/6	WDC12/16	DJP16	-	-	FLC400	ECG16	ECGD16	SD16	SDD16
18	45	VFD18/6	WDC18/22	DJP18	-	-	FLC450	ECG18	ECGD18	SD18	SDD18
20	50	VFD20/6	WDC18/22	DJP20	-	-	FLC500	ECG20	ECGD20	SD20	SDD20



Size		Multi Spigot Box(4)	Grille Box(5)		Gravity Shutter(6)	External Louvre(7)	Wall Cowl	Roof Terminal		Anti Vibration Mounts	
in	cm		Top	Side				Standard	Shutters	Standard	Spring
4	10	MSB4/-	-	-	GG4	FG4	VWC	-	-	AVM1	AVMS
5	12	MSB5/-	-	-	GG5	FG5	VWC	-	-	AVM1	AVMS
6	15	MSB6/-	GB6/4	GBS6/4	GG6	FG6	VWC	-	-	AVM1	AVMS
8	20	MSB8/-	GB8/6	GBS8/6	GG20	FGS8	-	RT200	RTS200	AVM1	AVMS
10	25	MSB10/-	GB10/6	GBS10/6	GG25	FGS10	-	RT200	RTS200	AVM1	AVMS
12	31	MSB12/-	GB12/8	GBS12/8	GG31	FGS12	-	RT300	RTS300	AVM1	AVMS
14	35	MSB14/-	GB14/10	GBS14/10	GG35	FGS14	-	RT350	RTS350	AVM1	AVMS
16	40	MSB16/-	GB16/12	GBS16/12	GG40	FGS16	-	RT400	RTS400	AVM1	AVMS
18	45	MSB18/-	GB18/-	GBS18/-	GG45	FGS18	-	RT400	RTS400	AVM1	AVMS
20	50	MSB20/-	GB20/-	GBS20/-	GG50	FGS20	-	RT500	RTS500	AVM1	AVMS

- (1) VAV4 and VAV5 also available in chrome, steel and with integral fire damper. VAV6 also available in chrome and steel.
 (2) Vectaire Flexible Ducting available in different lengths. Insulated aluminium and acoustic aluminium flexible ducting also available.
 (3) For use with circular, rigid ducting
 (4) Code represents size of main and side branches, e.g MSB12/10 is 12" main and 10" side branches.
 (5) First number represents Grille Box size, second number duct diameter (both sizes in inches) - other size/diameter combinations available
 (6) 10, 12 and 15cm Gravity Shutters plastic - other sizes with metal frame and plastic louvres.
 (7) 10, 12 and 15cm External Louvres plastic - all other sizes aluminium with birdscreen
 N.B - all grilles and grille boxes available in larger sizes.

Vectaire Ltd
 Lincoln Road
 Cressex Business Park
 High Wycombe
 Buckinghamshire
 HP12 3RH
 Tel: +44 (0)1494 522333
 Fax: +44 (0)1494 522337
 Email: sales@vectaire.co.uk
 www.vectaire.co.uk

